

Decisions Matter: The Four Question Spacetime Bio-model

Author: Lachlan Madden

Affiliation: No affiliation

E-mail: Lachlan.Madden1994@gmail.com

Orcid id: 0009-0000-8625-691X

Abstract

This paper aims to describe the generations of particles and waves and describes the type of decisions they represent. This paper suggests that communication, decisions, certainty, and their variants are fundamental, and that universe as a whole is communicating the non-contradiction contradiction, or the contradictory non-contradiction, that which one cannot truly know, which is false. This paper introduces an equation for gravity and tries to explain what the result of a quantum gravitational system is. This paper uses physics to explain biology and uses biology to explain physics. This paper introduces a bio-space-time model representing the brains ability states, where space is recognition, time is perception, and spacetime is sense, and all together is communication. This paper was written under the implication that anything that describes everything is false.

Methods

To model the types of communication, the method that was chosen was that there exists a fundamental hierarchy of communication. The hierarchy was chosen based on the assumption that there exists an anti-brain, and that the brain represents that hierarchy. Therefore, it was assumed that there is an objective and subjective reality, for which both sit underneath the hemispheres, for which various general areas stem from both subjective and objective reality areas. To model the general areas of communication, a generalised approach was taken when modelling said areas, where when looking at the universe in a generalised way, one can reduce say for example chemicals, into a general area of chemical communication. Once a general area of communication has been identified, the rule of six was introduced, which states that for every general area, there are six primary areas of communication that stem from the general area. Once a primary area has been identified, it stems into two secondary areas, and into four tertiary areas.

Results

Table 1. Generations of left hemisphere

| Generation | Generation absolute zero | Generation positive zero | Generation one |
|------------------------|---|----------------------------------|-------------------------|
| Left hemisphere | Between non-quantum and beyond anti-quantum | Absolute fluid quantum | Fluid quantum |
| Generation | Generation two | Generation three | Generation four |
| Left hemisphere | Absolute quantum | Quantum | Quantum yet mis-quantum |
| Generation | Generation five | Generation six | Generation seven |
| Left hemisphere | Mis-quantum | Absolute mis-quantum | Non-quantum |
| Generation | Generation eight | Generation absolute eight | |
| Left hemisphere | Absolute non-quantum | Non-quantum yet fluidly quantum | |

Table 2. Generations of right hemisphere

| Generation | Generation absolute zero | Generation positive zero | Generation one |
|-------------------------|--|---|---------------------------------|
| Right hemisphere | Between beyond quantum and beyond anti-non-quantum | Absolute beyond quantum | Beyond quantum |
| Generation | Generation two | Generation three | Generation four |
| Right hemisphere | Absolute quantum | Quantum | Between quantum and non-quantum |
| Generation | Generation five | Generation six | Generation seven |
| Right hemisphere | Non-quantum | Absolute non-quantum | Beyond non-quantum |
| Generation | Generation eight | Generation absolute eight | |
| Right hemisphere | Absolute beyond non-quantum | Between beyond non-quantum and beyond quantum | |

Table 3. Certainty of right lateralization

| | | | |
|-------------------|--|---|----------------------------------|
| Generation | Absolute zero | Positive zero | One |
| Certainty | Certain fluid anti-certain yet certain non-certainty | Certain non-certainty | Uncertain non-certainty |
| Generation | Two | Three | Four |
| Certainty | Certain mis-certainty | Uncertain mis-certainty | Certainly uncertain bi-certainty |
| Generation | Five | Six | Seven |
| Certainty | Uncertain certainty | Certainly certain | Uncertain fluid certainty |
| Generation | Eight | Absolute eight | |
| Certainty | Certain fluid certainty | Certain non-certainty yet certain fluid certainty | |

Table 4. Generations of right hemisphere position communication

| | | | |
|-----------------------------------|---|---|---|
| Generation | Absolute zero | Positive zero | One |
| Type of position | Certain non-certainty yet anti-certain fluid certainty it's fluid anti-positionless non-position – Hyper-non-position | Certain non-certainty it's positionless | Uncertain non-certainty it's positionless |
| Generation | Two | Three | Four |
| Type of position | Certain mis-certainty of misposition | Uncertain mis-certainty of misposition | Certainly uncertain bi-certainty it's either misposition or position and you can't decide which, so you make an undecided decision it's both, un-positioned |
| Generation | Five | Six | Absolute six |
| Type of position | Uncertain certainty of position | Certain certainty of its position | Uncertain certainty it's fluid position |
| Generation | Eight | Absolute eight | |
| Type of position particles | Fluid certain certainty it's fluid position | Between certain non-certainty and fluid certainty that it's positionless position – hyper-certain of hyper-position | |

Table 5. Generation of right lateralized decision

| Generation | Absolute zero | Positive zero | One |
|--|---|---|--------------------|
| Type of right hemisphere decision | Absolute anti-non-decision non-decision– a hyper-non-decision | Absolute non-decision | Non-decision |
| Generation | Two | Three | Four |
| Type of right hemisphere decision | Absolute mis-decision | Mis-decision | Undecided decision |
| Generation | Five | Six | Seven |
| Type of right hemisphere decision | Decision | Absolute decision | Fluid decision |
| Generation | Eight | Absolute eight | |
| Type of right hemisphere decision | Absolute fluid decision | Absolute non-decision fluid decision – a hyper-decision | |

Table 6. Generations of where (in space) decisions

| Generation of space | Absolute zero | Positive zero | One |
|-------------------------------|----------------------|--|----------------------|
| Right hemisphere space | Hyper-non-space | Absolute non-space | Non-space (No-space) |
| Generation of space | Two | Three | Four |
| Right hemisphere space | Absolute mis-space | Mis-space | Un-space |
| Generation of space | Five | Six | Seven |
| Right hemisphere space | Space | Absolute space | Fluid space |
| Generation of space | Eight | Absolute eight | |
| Right hemisphere space | Absolute fluid space | Hyper-fluid-space (Absolute no-space yet absolute fluid-space) | |

Table 7. The values of right lateralization

| Generation | Generation zero | Generation positive zero | Generation one |
|------------|--|--|---|
| Value | Between a non-value and an anti-non-value (fluid value) – absolute fluid non-value – hyper-non-value - fluidly undefined value | Certain non-certainty of absolute non-value – no possible value – Absolute non-quantum | Uncertain non-certainty of non-value – no possible value – Non-quantum |
| Generation | Generation two | Generation three | Generation four |
| Value | Certain mis certainty of negative value – Absolute mis-quantum | Uncertain mis-certainty of negative value – Mis-quantum | Certainly uncertain bi-certainty of un-value.- Can't decide that it's either negative or positive so it's both, a zero – un-quantum |
| Generation | Generation five | Generation six | Generation seven |
| Value | Uncertain positive value - quantum | Certain positive value – absolute quantum | Fluid uncertain certainty of fluid value – fluidly quantum |
| Generation | Generation eight | Generation absolute eight | |
| Value | Fluid certain certainty of fluid value – absolute fluidly quantum | Non-certain fluid certainty of non-valued fluid value – Hyper-fluid-value -undefined fluid value | |

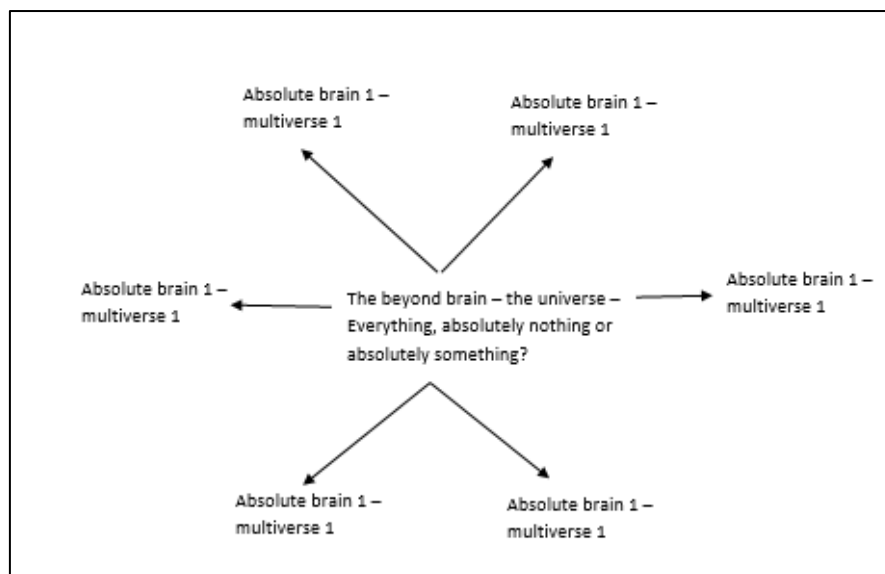


Figure 1. Multiverse of all possible brains

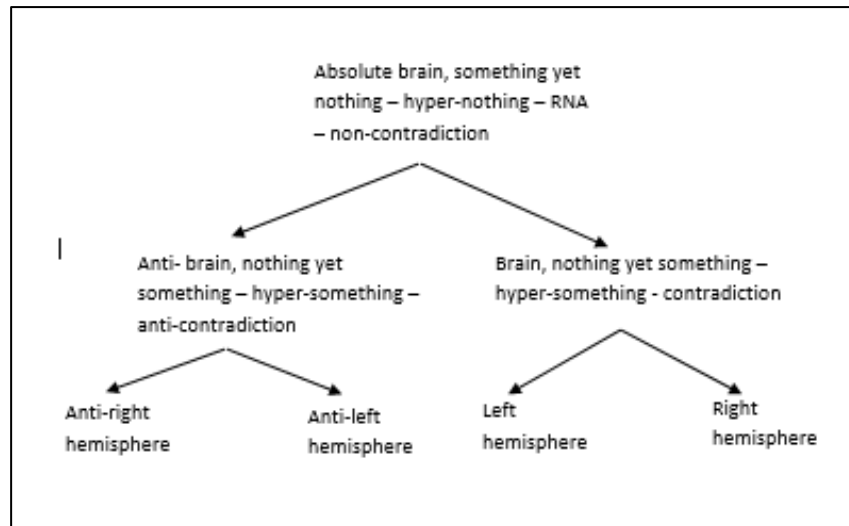


Figure 2. Top layer of brain hierarchy communication

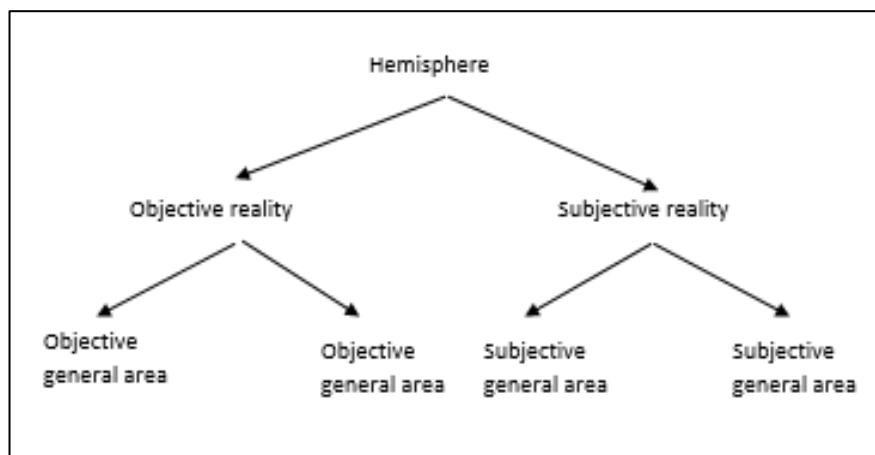


Figure 3. Sub areas of right hemisphere communication

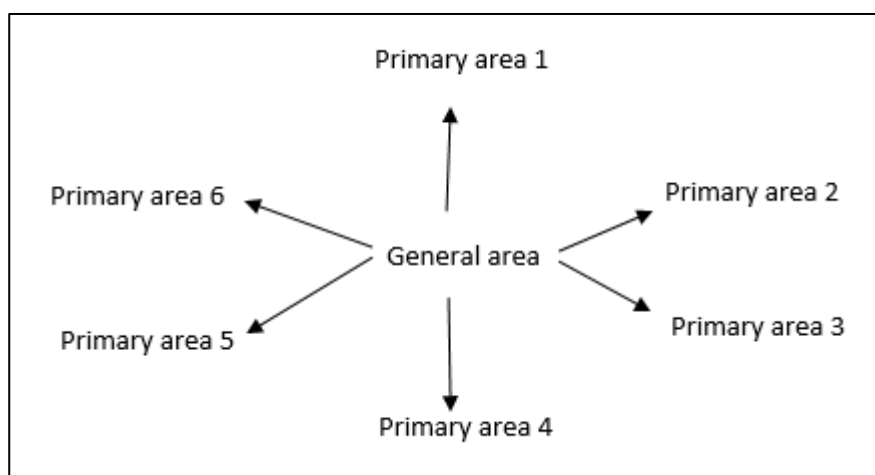


Figure 4. General area sub area communication

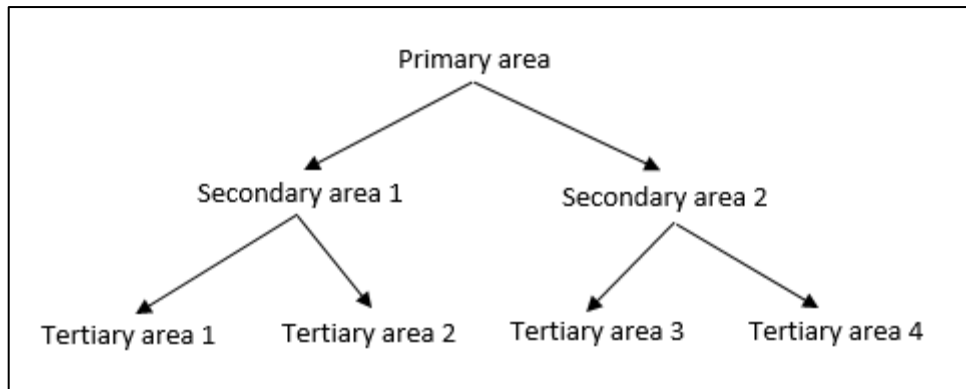


Figure 5. Primary area and sub area communication

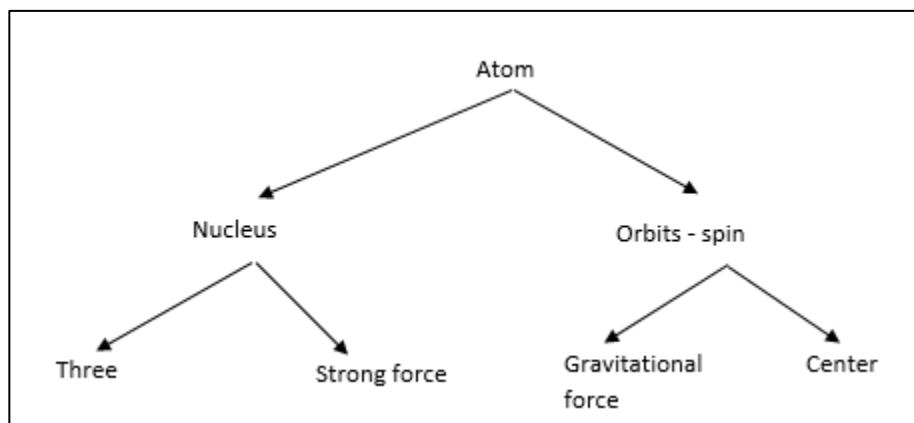


Figure 7. Atom and sub areas of communication

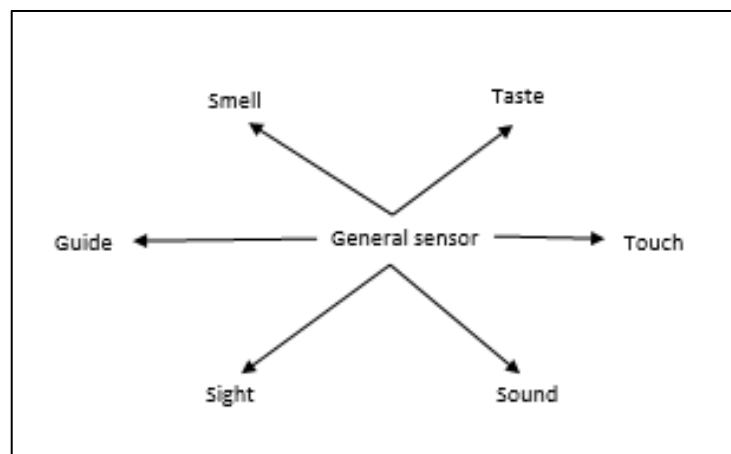


Figure 8. General sensor spacetime

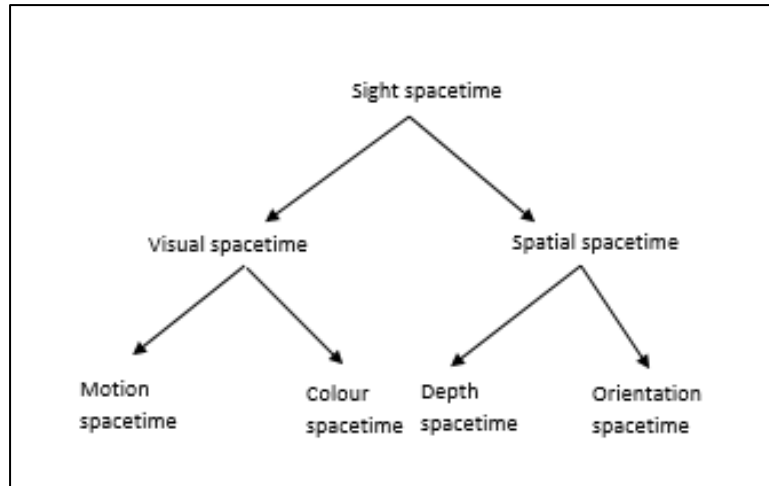


Figure 9. Sight spacetime and sub areas

Discussion

For every type of communication time and information space in this universe there exists three questions. That being the what, the where, and the when. For example, which communication, the communication of gravity having three questions. The where (in space) may possibly be circumference, the when (in time) possibly being the radius, and the what (in spacetime) being the acceleration, creating an equation, where:

$$\text{Gravitational communication} = \left(\text{Sense} = \frac{\text{Recognition}}{\text{Perception}} \right)$$

$$g \text{ acceleration} = \frac{\text{Circumference}}{\text{Radius (of the inner core)}}$$

So, therefore, when working out earth's gravity:

$$g = \frac{40075\text{km}}{1220\text{km}}$$

$$g = 32.8483\text{km}$$

$$g = 9.1245\text{m}$$

Admittedly, there is some discrepancy comparing this answer to the accepted gravity of earth's surface of 9.80665m/s^2 .

So, what would be the radius of the core if earths gravity is equal to 9.80665m/s^2 ?

$$\text{Radius} = \frac{40,075\text{km}}{9.80665\text{m/s}^2 \times 3.6}$$

$$\text{Radius} = \frac{40075\text{km}}{35.30394\text{km}}$$

$$\text{Radius of earths inner core} = 1135.1424\text{km}$$

Therefore does the earths inner core have an estimated 1135km radius? If the earths core is equal to 1135km, then this can be used in the equation to estimate the gravitational acceleration, where:

$$g = \frac{40,075\text{km}}{1135.1424\text{km}}$$

$$g = 35.30394\text{km/s}^2$$

Where converted into meters per second squared:

$$g = 9.80665\text{m/s}^2$$

Therefore, given each question of communication, the how, has three sub-questions, the where in space, the when in time, and the what In spacetime, each question is reflected in the decision dimensions, where the equation of the where and when equalling the what, with all three decisions equalling the how (it gets communicated), whether it's hyper-non-communicating hyper-non-gravity, non-communicating non-gravity (non-quantum), mis-communicating mis-gravity (mis-quantum), un-communicating un-gravity (half quantum half non-quantum, hyper-quantum or hyper-mis-quantum?) communicating gravity (quantum), fluidly communicating fluid-gravity (fluidly quantum), and hyper-communicating (non-communication communication of non-quantum yet fluidly-quantum – hyper-fluidly-quantum) of hyper- fluid gravity. For example, one decision area may be a (where) mis-decision, another decision area may be a (when) fluid decision, equalling a (what) decision, and so on, equalling a certain generation of the communication of gravity. If the where and the when of a right hemisphere is equal to a sixth generation decision (absolute quantum), equalling a sixth generation what decision, then therefore it's absolutely communicating a sixth generation tcommunication of an absolute non-quantum certainly certain decision. Therefore given quantum mis-communication, as mis-quantum mechanics is fundamentally mis-communication, quantum gravitational mis-acceleration has a value, however the true value is not what it seems. So therefore, the question to ask is what is mis-acceleration? Perhaps it is deceleration. Therefore it is suggested that a mis-quantum gravitational system decelerates, instead of accelerating. The next question to ask would be what is a mis-circumference, the opposite of circumference, and where is the mis-radius, the opposite of a radius. The final equation of course may look like:

$$-g = \frac{\text{Opposite of circumference}}{\text{opposite of radius}}$$

Therefore, if a mis-decision (a negative value) is opposite to a decision (a positive value) a fluid decision (all possible values) is opposite to a non-decision (No possible value – undefined), and an undecided decision is its own opposite (a half quantum half non-

quantum value, hyper-quantum?), then it may be reasonable to assume that if earth was a mis-quantum system then it would have the gravitation deceleration of -9.80665m/s^2 .

Given the four questions of the brain, there exists four questions for the strong force, the weak force, and electromagnetism. But of course electromagnetism is unique in this regard as electromagnetism combines two types of communication. Therefore there are fraction questions in regards to electromagnetism. For example, one half where (recognition) in space is electricity, one half where in space is magnetism. One half when (perception) is it electricity one half when is it magnetism, one half what (sense) is electricity one half what is magnetism, existing in fraction dimensions. This can also be applied to particles, for example where in space is an electron, when in time is an electron, what in spacetime is an electron, equalling how (communication) it's an electron. Considering electromagnetism is the combination of two communication areas, this can be translated to the brain, with the mechanism that combines two (or possibly more?) areas of communication to create an altered form of communication being synaesthesia. Synaesthesia may be the Higgs mechanism, whereby the communication of mass gets combined with the communication of quarks, creating massive quark communication. It is not certain which communication quarks are, but what is certain is that they are quantum mis-identification and quantum identification. So therefore, given spin, which may be communicating orbits, gets combined with quarks that they create a three thirds communication of spinning massive quarks. And of course you can add another quarter communication of gravity, to combine spinning massive gravitating quarks, a four quarter synaesthetic communication existing in fraction communication dimensions. Therefore, it may be possible to combine the forces into a four-quarter unified force communication, but may not necessarily be necessary, just as a four-quarter communication of socially motivated unpleasant odour that brings crying laughter isn't necessary, or a four-quarter communication of visually acidic election rage isn't necessary. Possible, however producing something absurd, just as the combination of the four forces may produce. The four forces are not the only types of communication of the universe. Each brain area represents a type of communication and explains everything that we experience. Everything is a brain construct, with something yet nothing being external to the brain, the absolute brain. The contradiction, the brain, is communicating a non-decision fluid decision, a hyper-fluid decision, an undefined fluid value, whereas the something yet nothing external to the brain, the between brain and the anti-brain, otherwise the absolute brain, is communicating an absolute decided (anti-non-decision) non-decision, a hyper-non-decision, a fluidly undefined value. Given the brain, nothing yet something (hyper-something), is a contradiction, and the absolute brain, something yet nothing (hyper-nothing), is a non-contradiction, perhaps there is a final layer of the hierarchy of the brain, that being the beyond brain, which is communicating the non-contradiction contradiction and the contradictory non-contradiction. The non-contradiction contradiction is hyper-nothing yet hyper-something. Absolutely hyper-something, or is it absolutely hyper-nothing? The beyond brain is the universal brain and connects every brain, which is false. A

multiverse of sorts, that being a multiverse within one underlying universe, which is false, and that for every absolute brain, there is a separate multiverse, a multiverse of all possible brains. For example, in one multiverse colour doesn't exist, and what exists is grey-scale, as that brain is colourblind, and yet in another multiverse colour does exist, as that brain can sense colour. Another example is motion. In one multiverse motion comes in discrete chunks (non-motion), as that brain can't sense motion, and yet in another multiverse motion is smooth and continuous, as that brain can sense motion. In another multiverse objective reality is an illusion, as that brain perceives (when in time) objective reality, and in another multiverse objective reality is a delusion, as that brain non-perceives objective reality. Therefore, it can be illusion time, mis-illusion time (an illusion that is not what it seems), fluid illusion time (an illusion which value changes in time), delusion time, illusion delusion time, and delusion illusion time, it all depends on what multiverse that brain has constructed., that is to say, if it is objective reality time, because if it's for example colour time, perhaps it's hue time, if it's sight time, it's expansion time, and if it's gravitational time, it's radius time. Given the universal non-contradiction contradiction (or is it the contradictory non-contradiction?), perhaps the curvature of the universe is the non-curving curvature, which is a false, which makes it true that it is hyper-non-curvature, which is false, so therefore the truth is that it's both, which is false, so therefore the truth is that it is neither, which is false, so therefore the truth is that it is all possible states, which is false, so therefore the truth is that it is the impossible state, impossible curvature, which is false. The non-contradiction contradiction, and the contradictory non-contradiction is communicating that false is true, or is it that true is false? So therefore if false is false, false is thereby true, but if false is true, false is thereby false, as false isn't false, as false is true, thereby leading to something circular. An infinitely regressing cyclic paradox of a true false, which is false. If the brain had to be something, perhaps the brain is DNA, where the contradictory genetic code runs parallel to each other. One layer higher on the hierarchy is the absolute brain, possibly being RNA, which may be a DNA anti-DNA pair, then beyond the absolute brain is the beyond brain, for which it's underlying essence is uncertain. Generation everything, the false generation, where the impossible state is a possible state. So if it is said that generation false is DNA, then therefore it is anti-DNA, but then if it's anti-DNA therefore it is DNA, which is false. So therefore it's right lateralized RNA, but if it's right lateralized RNA it is therefore left lateralized RNA, which is false. So therefore it's both left and right lateralized RNA, which is false, so therefore it's neither right or left lateralized RNA, which is false, so therefore it's all possible RNA, which is false, so therefore it's the impossible RNA, which is false. Everything is false, so what is the truth? If DNA is the brain, Is a neuron beyond the brain? False. Considering entanglement, perhaps this is why entanglement exists, because every brain in the universe may possibly be connected, by the universal brain, which is false, as the universal brain is false. Therefore, entanglement is always opposite to what is expected, so if it is true that everything is entangled, then it is false that everything is entangled, and so therefore it must be true that nothing is entangled, so therefore it is false that nothing is entangled. Therefore both nothing and everything is entangled, which is

false, so therefore neither nothing and everything is entangled, which is false. Then therefore it's all possible states, which is false, so therefore it's impossible entanglement, which is false. Given this, perhaps a black hole is the non-contradiction contradiction, which is the falsely entangled generation, a neuron perhaps, which is false. A black holes false generation is a black holes true generation. A black holes false mass is a black holes true mass. A black holes false gravity is a black holes true gravity. A black holes false spin is a black holes true spin. False. Considering the equation for gravity introduced in this paper, it is uncertain that a black hole has gravity, as a black hole has no body, which may be a true false, as zero circumference divided by zero radius is undefined – a non-value, therefore it leads to the assumption that a black hole has non-gravity, which is false. Given the generations, perhaps a black hole is generation absolute zero of simultaneously both hemispheres, leading to two non-contradictions that equals one contradiction. Two equals one, which is false. So if it is true that a black hole is generation absolute zero of the right hemisphere, then it is false, then therefore the black hole must be a true generation absolute zero of the left hemisphere, which is false. This leads to the outcome that to know a black holes true generation would imply that you know its false generation, which is false.

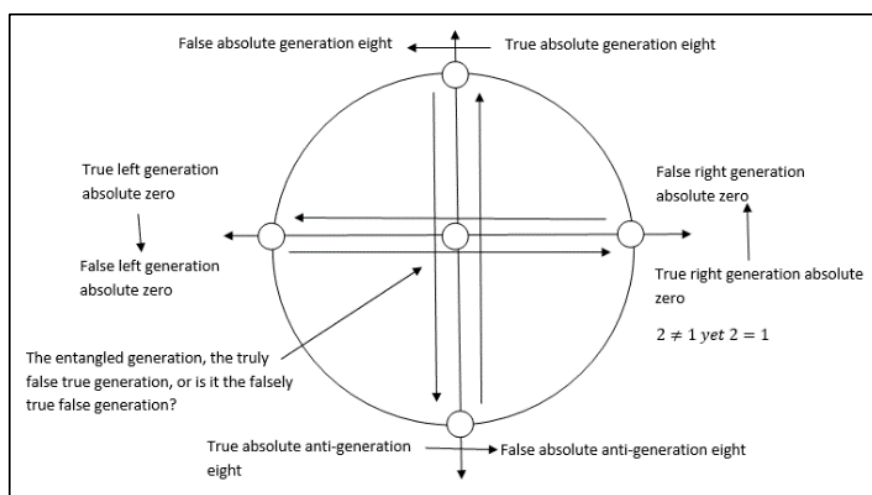


Figure 8. False

It is unknown if a black hole is also combining generation absolute eight of the hyper-hemisphere and generation absolute eight of the anti-hyper-hemisphere. Perhaps it combines a generation anti-generation absolute eight contradiction and a generation absolute zero of the right anti-left hemisphere and generation absolute zero of the left ant-right hemisphere creating a non-contradiction to create a hyper-non-contradiction yet hyper-contradiction, which makes it an absolute complete hyper-contradiction, which is false. That is under the assumption that the non-contradiction is lateralized to the left, which is false. Therefore, it may be possible that it is the contradictory non-contradiction, or is it the non-contradiction contradiction, thus to know the lateralization of the word non-

contradiction and the word of contradiction is to know its false lateralization, therefore to know the truth of the matter, is to know what you know is false, which is false. Perhaps the closer you are to the black holes center, the further reduction in dimensions there is, with the implication that there are many event horizons, each representing a downsizing of a dimension, say for example once you pass the third dimension even horizon and exist in two dimensions, the only direction you can travel is forwards and right, or backwards and left, and the direction to escape is to travel up and down , for which you cannot, which is false. To take this further, to know what created the universe, perhaps a black hole [1], is to know that if you knew what created the universe is to know that what you know is false, which is true, a falsely true false, or is it a truly false true? Although what has just been said is false. So therefore a neuron created the universe, therefore implying the universe created the universe, which is false. Again, a cyclic paradox, which is false. So therefore, can something escape a black hole? The answer is always opposite to what you expect, which is false. Therefore, if a black hole is nothing, therefore it is something, and if it is something, then therefore it is nothing, and if it's both, it's neither, and therefore if it's neither, it's both. This can be applied when describing a universal property. So, if the universe is in hyper-motion, the universe actually is anti-hyper-motion, and if it is anti-hyper-motion then therefore the universe is in motionless fluid motion (hyper-motion), that is to say if the universe as a property is absolutely something, and so if the universe as a property is absolutely nothing, then therefore it is hyper-motionless, and if it is hyper-motionless then therefore it is actually absolute hyper-motion (anti-motion motion). There's an anti-universe [2], and so therefore if there is an anti-universe then there isn't an anti-universe, and so therefore if there isn't an anti-universe, then therefore there is an anti-universe. The universe is cyclic [3], which means the universe isn't cyclic, and so if the universe isn't cyclic, then the universe is cyclic, and if it's both, its therefore neither, and if it's neither it's therefore both. The universe has an age, therefore the universe is ageless, therefore if the universe is ageless therefore the universe has an age. A cyclic paradox that doesn't cycle, false. And if it's neither cycling nor non-cycling, it's both, and if it's both, it's neither. If it's all four absolute generations then it's none. If it's simultaneously none of the absolute generations then it's all. Even to say it is a paradox isn't true, it's false that it's a paradox, which makes it true that it is a paradox. A paradoxically non-paradoxical paradox, or is it a non-paradoxically paradoxical non-paradox? To know the true beginning of the paradox is to know the false beginning, and to know the true end of the paradox is to know the false end, which, of course, is false.

What needs to be taken into account is the existence of both objective and subjective reality. So therefore there is both objective position and subjective position. A scenario where this plays out is an observer who walks to a closed door and asks an object inside the room if they are in the room. The observer has yet to check, however the object responds with "Yes, I am in the room" The observer interprets that as being in the room on the chair, so therefore that is the interpretation of the objects objective position but does not realise

that is the objects subjective position, so when the observer opens the door to the room and sees that the object isn't there in the positively valued room on the chair. The observer has yet to check the negatively valued room, under the bed, where the objects true objective position is.

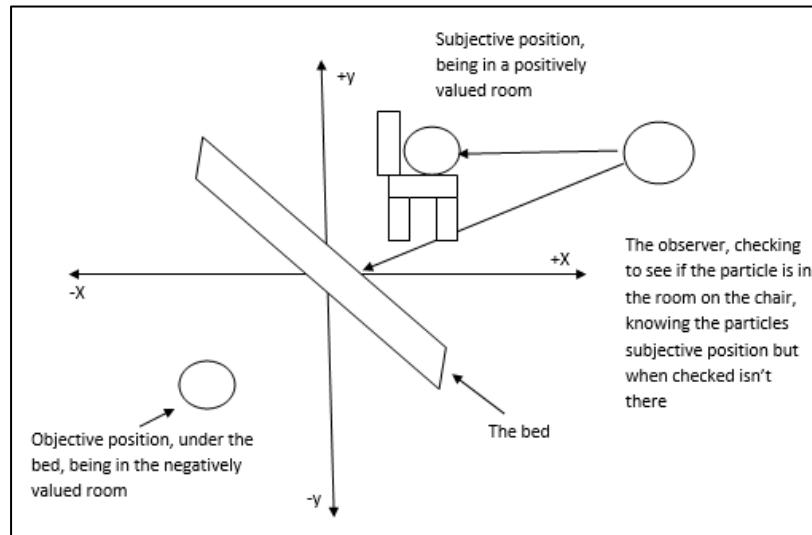


Figure 9. Under the Bed

The observer then thinks where in the room is the object. “Is the object under the bed?” the observer asks themselves, however the observer is uncertain about this, therefore the object from the observer’s reference frame is a generation three uncertainly mis-certain objective object position. The observer then looks under the bed, and the uncertainly mis-certain position of the generation three object becomes a generation six certainly certain objective object position.

There is an argument to be made that chemicals represent mathematics, where they are one in the same. Not only this, perhaps there is a mathematical model for each general area, say for instant sight communication, which is geometric communication, spatial communication, which is plane communication, and depth communication, which is a point communication (focal point). So therefore, given the model of the atom, each communication type of the atom represents a type of mathematical operation. For example, the atom in itself is equals, equalling an element, the nucleus is greater than or equal to 1, spin is lesser than or equal to 1, quarks are addition that is something equal to three, gluons are to the power of which is equal to a value, gravity is division, which equals a value, and the center is subtraction, which is equal to a value. Therefore, given gravities hypothesised “where” is circumference and “when” is the radius, appearing in an equation, equalling a “where is when (what)” (it accelerates) this may also be applied to the other forms of communication of the atom, for example a generalised gluon equation may look like:

$$\text{How} = (\text{Where}^{\text{when}} = \text{What})$$

$$\text{Communication} = (\text{Recognition}^{\text{Perception}} = \text{Sense})$$

$$\text{Space and time} = (\text{Space}^{\text{Time}} = \text{Space is time})$$

And for gravity:

$$\text{How} = \left(\frac{\text{Where}}{\text{When}} = \text{What} \right)$$

$$\text{Communication} = \left(\frac{\text{Recognition}}{\text{Perception}} = \text{Sense} \right)$$

$$\text{Space and time} = \left(\frac{\text{Space}}{\text{Time}} = \text{Space is time} \right)$$

$$\left(\frac{\text{Circumference space}}{\text{Radius time}} = \text{Accelerating space is accelerating time} \right) \\ = \text{Gravitational communication}$$

$$\left(\frac{\text{Circumference space}}{\text{Misradius time}} = \text{Accelerating space is decelerating time} \right) \\ = \text{Gravitational uncommunication}$$

$$\left(\frac{\text{Miscircumference space}}{\text{Misradius time}} = \text{Decelerating space is decelerating time} \right) \\ = \text{Gravitational miscommunication}$$

$$\left(\frac{\text{Fluid circumference space}}{\text{Fluid radius time}} = \text{F acceleration space is F acceleration time} \right) \\ = \text{Gravitational fluid communication}$$

$$\left(\frac{\text{Noncircumference space}}{\text{Nonradius time}} = \text{Nonacceleration space is nonacceleration time} \right) \\ = \text{Gravitational noncommunication}$$

There may even exist more questions, being the who (can it be identified and does it have a subjective identity, for example, it's been identified as a quark), the why (information), and the way (the direction), but for now it is uncertain if that is the case, for example the gravitational equation may look like.

$$\text{A why in space is how in time} = \text{Where in space} \div \text{when in time} \\ = \text{what in space is who in time} = \text{the way in space is the way in time}$$

$$\text{Gravitational information space is gravitational communication time} \\ = \text{Recognising circumference space} \div \text{Perceiving radius time} \\ = \text{Sensing acceleration space is identifying accelerating time} \\ = \text{the way of inward space is travelling forwards time}$$

Gravitational misinformation space and gravitational miscommunication time
 = *Misrecognising miscircumference space*
 ÷ *Misperceiving misradius time*
 = *Missensing deceleration space is misidentifying deceleration time*
 = *The way of outward space is travelling backwards in time*

Therefore there are four questions of space and four questions of time, if it is the case if there are more questions. Therefore, if everything is quantum, which is false, what would a quantum gravitational system be? It is suggested in the equation below:

False information space and true communication time
 = *True recognition space ÷ Falsely perceiving time*
 = *False sensing space is true identifying time*
 = *The true way in space is the false way in time*

False gravitational space and true gravitational time
 = *True circumference space ÷ False radius time*
 = *False acceleration space is true acceleration time*
 = *True inward space is falsely travelling forward in time*

Therefore if equating the acceleration of a particle due to gravity

True zero circumference ÷ True zero radius
 = *Falsely undefined acceleration space is falsely undefined accelerating time*

And for quarks:

How = (Where + When = What)

Communication = (Recognition + Perception = Sense)

Space and time = (Space + Time = Space is time)

One up space + Two down time = Three in space is three in time

And for the center:

How = (Where – When = What)

Communication = (Recognition – Perception = Sense)

Space and time = (Space – Time = Space is time)

And for spin:

How = (Where ≤ When = What)

Communication = (Recognition < Perception = Sense)

Space and time = (Space ≤ Time = Space is time)

And for the nucleus:

How = (Where > When = What)

Communication = (Recognition > Perception = Sense)

Space and time = (Space > Time = Space is time)

Neutron space \geq Proton time = Stability space is stability time

And for the atom:

How = ((Where = When) = What)

Communication = ((Recognition = Perception) = Sense)

Space and time = ((Space = Time) = Space is time)

For objective reality:

Denial space + Delusion time = Space isn't real and so is time

Acceptance space + Illusion time = Real space is real time

For sight:

Eye space + Expanding vision time = Seeing space is seeing time

For everything:

Space is false + Time is true = True in space is false in time

Space is true + Time is false = False in space is true in time

A truly false space + a falsely true time = A falsely true space is truly false time

A falsely true space + a truly false time = A truly false space is falsely true time

Paradoxical space + Nonparadoxical time = Nonparadoxical space is paradoxical time

Nonparadoxical space + Paradoxical time = Paradoxical space is nonparadoxical time

Space is nothing + Time is something = Something space is nothing time

Space is something + Time is nothing = Nothing space is something time

Known space + Unknown time = Unknown space is known time

Unknown space + Known time = Known space is unknown time

What can't be known can be known, what can be known can't be known

What decision state am i in? Unless observed, your guess is false, and therefore true

The answer depends on nothings something too

To know what's up, is to know it's down

A black hole, a place where contradictions abound

Recognition space + Perception time = Sensing space is identifying time

Where in space + When in time = When in space is where in time

The space beyond something + The time beyond nothing

= The space beyond nothing is the time beyond something

The space beyond nothing + The time beyond something

= The space beyond something is the time beyond nothing

The space beyond something is the time beyond nothing

+ The space beyond nothing is the time beyond something

= The false generation, a true anything

And so every space + Every time = Any space is any time
Entangled space + Entangled time = Spacetime entanglement is generation nine
Superposition space + Superposition time = Spacetime superposition is generation nine
One state is false, the other state is false
The both state is false and the neither state is false
The all possible states, false
Therefore the impossible state, false
As the impossible state is a possible state
Just like those who memorise every calendar date
Everything is false, and so therefore true
Everything depends on what you choose
Every generation, the false generation, every generation, the true generation
It's all false speculation
Decision space + Decision time = Decision states deliver spacetime lines
Universal space + Universal time = The universal spacetime rhyme
False

Therefore, if trying to quantize spacetime

Spacetime is truly continuous = Spacetime is falsely continuous
Spacetime is falsely continuous = Spacetime is truly continuous
Spacetime is both truly continuous and falsely continuous
= Spacetime is neither truly continuous or falsely continuous
Spacetime is truly all possible continuity = Spacetime is falsely all possible continuity
Therefore it's true that spacetime is impossibly continuous
= False impossibly continuous
Spacetime is truly discrete = Spacetime is falsely discrete
Spacetime is falsely discrete = Spacetime is truly discrete
Spacetime is both truly discrete and falsely discrete
= Spacetime is neither truly discrete or falsely discrete
Spacetime is truly all possible discreteness
= Spacetime is falsely all possible discreteness
Spacetime is truly impossibly discrete = Spacetime is falsely impossibly discrete
Impossibly discrete is possibly discrete
Truly impossibly discrete = Falsely impossibly discrete
True four dimensions = False four dimensions
A true zero dimensional position particle = a false zero dimensional position particle
A true one dimensional distance string = a false one dimensional distance string
A true two dimensional area wave = a false two dimensional area wave
A true three dimensional volume field = a false three dimensional volume field
True spacetime probability = False spacetime probability
A particle is position of spacetime, a string is the distance of spacetime
A wave is the area of spacetime, and a field is the volume of spacetime
False quantum dimensions are true quantum dimensions

The next question to ask, what is mis-subtraction, mis-to the power of, mis-division, and mis-addition, that being negatives, as a mis-decision (not necessarily the wrong decision) are negatives, revealing an answer that isn't what it seems, unless it's mis-mathematical. Given these equations, there are questions that arise from mathematics being the communication of chemicals (and for every other brain area), and that is the general area itself, as every lower form of communication stems from a general area, that being, how is it a general chemical, what is a general chemical, when is it a general chemical, and where is it a general chemical? As the general area of communication is the combination of all communication areas that stem from that general area of communication, such that a general chemical "what" is the combination of all "what" of the sub areas of a general chemical communication, does there exist a general formula that combines all areas of generalised mathematical communication, a general chemical formula? A general mathematical formula? What is the generalised mathematical communication model?

Conclusion

To imply that there will ever be a complete model of the universe is false, so therefore the model will forever remain incomplete, which is false. A complete paradox, an incomplete paradox, a complete non-paradox, and an incomplete non-paradox? Incompletely complete? Completely incomplete? A paradoxically non-paradoxical paradox? A non-paradoxically paradoxical non-paradox? Where is universal space? When is universal time? What is universal spacetime? The universe, the beyond brain, everything, beyond nothing, or beyond something? One or the other, both or neither, all or none? One hemisphere may be objectively subjective, and one hemisphere might be subjectively objective, so which one is it? All that stems from everything is a biosystem, and while the model of the absolute brain and all that sits under its hierarchy isn't a model of the beyond brain, the universe, it does include the universe (or does it exclude it?). Is the universe a biosystem? False. The chemical equations introduced for the atom in this paper may be false, which doesn't then therefore make it true, so therefore there may still exist a generalised spacetime mathematical model for the atom and sub areas, just not what is shown in this paper.

The absolute generations are always undefined non-values, whether it's a fluid non-value, or a non-fluid-value. There are decision states associated with every layer of the bio-model hierarchy, whether it's a fluid-non-decision, a non-decision, a mis-decision, a decision, a fluid decision, and a non-fluid decision. Communication and its variants, that being non-communication, mis-communication, fluid-communication, communicating mis-communication (or mis-communicating communication, which one is it?), fluidly communicating non-communication and non-communicating fluid communication are fundamental (including decisions), and when applying the four question spacetime bio-model to each area, has the potential to explain what you want to explain.

Everything is false, but even the notion that everything is false, is false.

References

1. N Oshita, J Yokoyama. Creation of an inflationary universe out of a black hole. *Physics Letters B*: 2018; 785: 197-200. <https://doi.org/10.1016/j.physletb.2018.08.018>
2. L Boyle, K Finn, N Turok. CPT-Symmetric Universe. 2018; *arXiv*: 1803.08928. doi: <https://doi.org/10.48550/arXiv.1803.08928>
3. P Steinhardt, N Turok. A Cyclic Model of the Universe. 2002; *arXiv*: arXiv:hep-th/0111030. doi: <https://doi.org/10.48550/arXiv.hep-th/0111030>